

# YR-1 Yield Stress Rheometer

a low-cost QC tool to enhance material characterization

## Displayed Information:

- Yield Stress Value (Pascal)
- % Torque

EZ-Yield Software included  
for use with a PC

Temperature Probe included  
(not shown)

Vane Spindle Geometry  
works with thin to  
highly viscous materials  
(Does not disturb sample  
during spindle insertion)

Choice of Spindle Sizes  
to fit any sample  
container

User-friendly Keypad  
and display for stand-alone  
operation

Ideal for QC

Simple to use

Excellent repeatability

Affordable



## BROOKFIELD VISCOMETERS

United States: T: 800.628.8139 or 508.946.6200 F: 508.946.6262 [www.brookfieldengineering.com](http://www.brookfieldengineering.com)

United Kingdom: T: 01279 451774 F: 01279 451775 [www.brookfield.co.uk](http://www.brookfield.co.uk)

## What's Included?

Instrument  
 V-72 & V-73 Vane Spindles ▼  
 EZ-Yield Software ►  
 Carrying Case

## Optional Accessories

RTD Temperature Probe  
 V-71, V-74 & V-75 Vane Spindles  
 Viscosity Standards  
 Temperature Bath

## Applications

### 1/4 RV SERIES — VERY LOW YIELD

Juices Beverages

### RV SERIES — LOW YIELD

Food Products Shampoo  
 Gels Yogurt  
 Hair Gels

### HB SERIES — MEDIUM YIELD

Chocolate Lotions  
 Food Products Ketchup  
 Hand Cream Personal Care Products  
 Jelly Toothpaste

### 5xHB SERIES — HIGH YIELD

Adhesive Caulk Pastes  
 Cheese Spread Peanut Butter  
 Fruit Preserves Shortening



## YR-1 Vane Spindles

V-72 and V-73 vane spindles with case are supplied with YR-1.

V-71 (large), V-74 (small) and V-75 (small) vane spindles are optional.

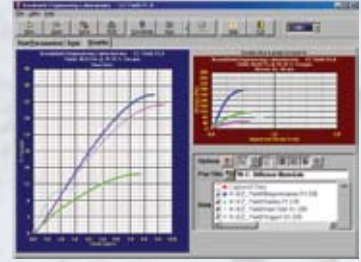
## EZ-Yield Software Included

### Easily program and capture data

EZ-Yield software is included with all YR-1 Yield Stress Rheometers and allows for simple data collection on a PC. Collecting data affords you a record of all your valuable testing results.



EZ-Yield Data Collection



EZ-Yield Test Plots for Multiple Samples

EZ-Yield software features a simple parameter menu for set up of 10 different test programs. Test parameters include: test number and name, spindle #, immersion mark, pre-shear (rpm), wait time before test startup, run speed (rpm), and low & high yield control limits (Pa) for QC use.

Streaming data can be viewed and test data — torque vs. time, stress vs. strain — is displayed in both tabular and graphical formats on a PC when using EZ-Yield software.

## Vane Spindle Ranges

SPINDLE	TORQUE RANGE	SHEAR STRESS RANGE (Pa)
V-71	1/4RV	.125-1.25
V-72	1/4RV	.5-5
V-73	1/4RV	2.5-25
V-74	1/4RV	25-250
V-75	1/4RV	10-100
V-71	RV	.5-5
V-72	RV	2-20
V-73	RV	10-100
V-74	RV	100-1K
V-75	RV	40-400
V-71	HA	1-10
V-72	HA	4-40
V-73	HA	20-200
V-74	HA	200-2K
V-75	HA	80-800
V-71	HB	4-40
V-72	HB	16-160
V-73	HB	80-800
V-74	HB	800-8K
V-75	HB	320-3.2K

Note:

- 1 Pa = 10 dyne/cm<sup>2</sup>
- Viscosity Range is given at rotational speed of 10 RPM
- 5xHB is the highest torque range available
- Not for use with DV-E Viscometers

M = 1 million K = 1 thousand Pa = Pascal  
 cP = Centipoise mPa·s = Millipascal/seconds



Brookfield Engineering Laboratories, Inc.

11 Commerce Boulevard  
 Middleboro, MA 02346-1031 USA  
 T: 800.628.8139 or 508.946.6200 F: 508.946.6262  
 W: www.brookfieldengineering.com